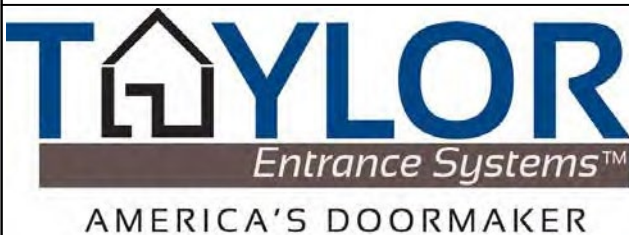
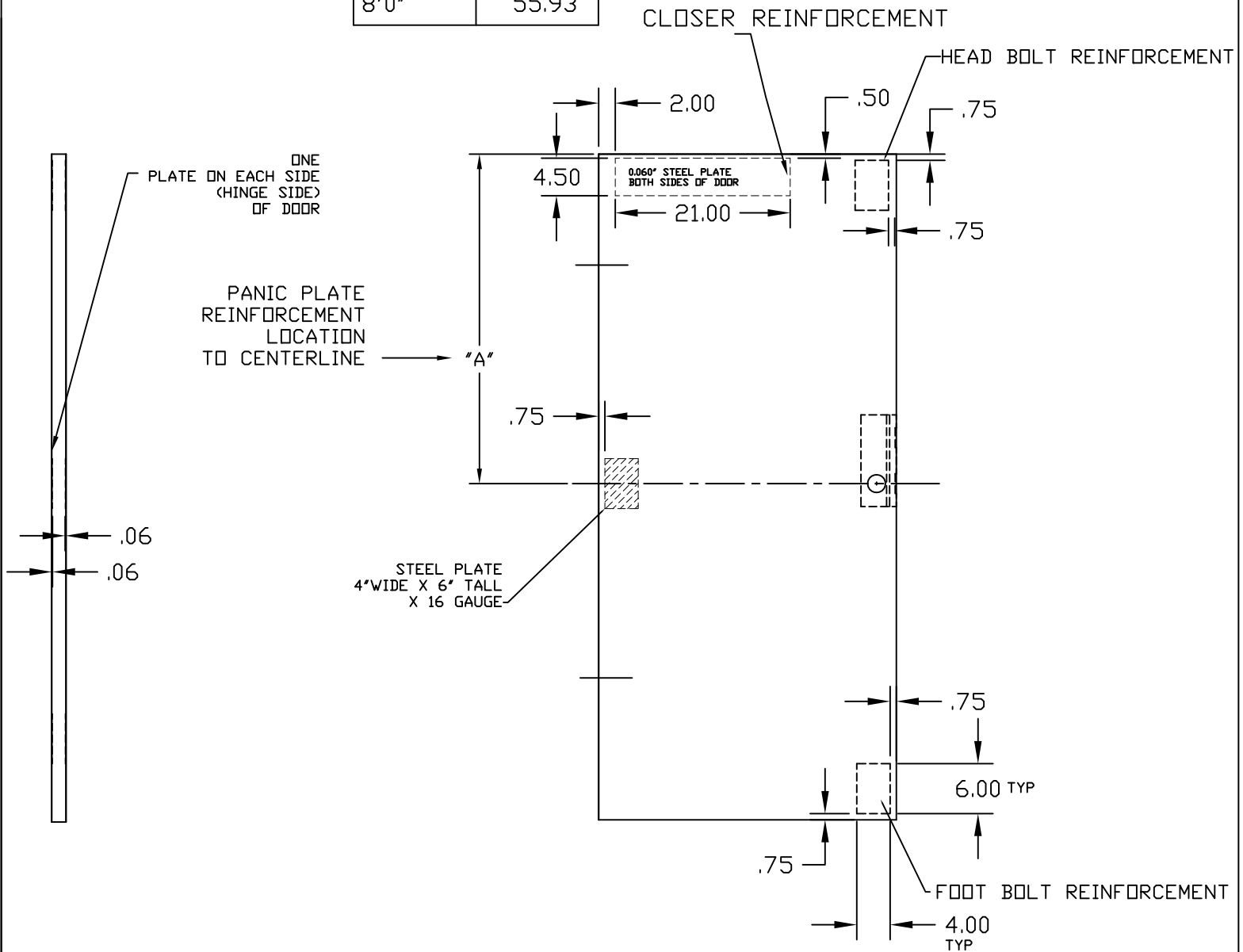


PANIC BLOCK PREP

PB

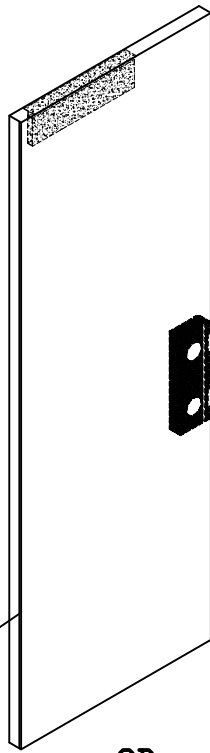
| DOOR HEIGHT | A |
|-------------|-------|
| 6'8" | 45.13 |
| 7'0" | 47.13 |
| 8'0" | 55.93 |



CLOSURE & PANIC ,HEAD & FOOT PREP
FOR STEEL DOORS

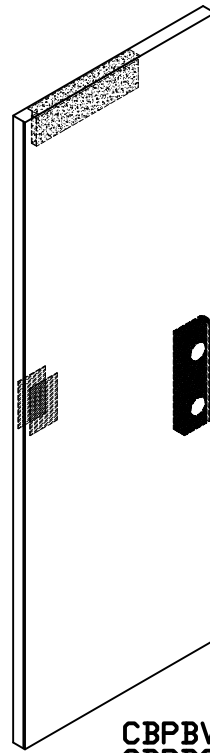
| | |
|---------|---------|
| DWG# | II-52 |
| DATE | 11-2-11 |
| NAME | KRB |
| SECTION | II |
| PAGE | 52 |

HINGE SIDE
OF DOOR

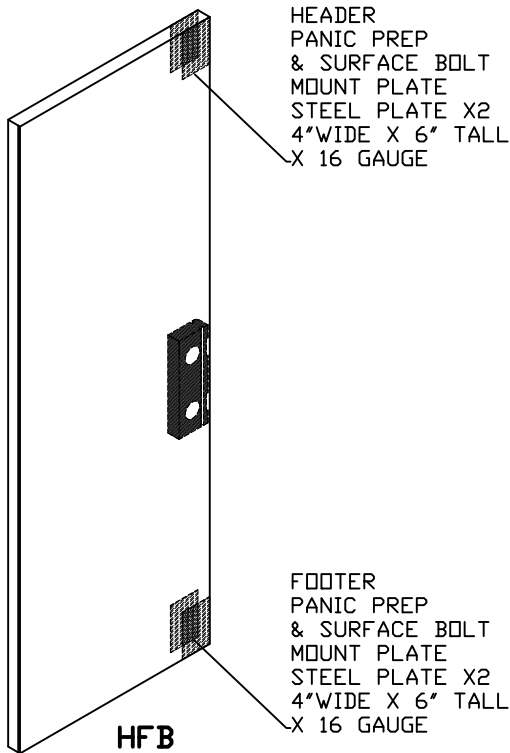


CB

CLOSER BLOCK



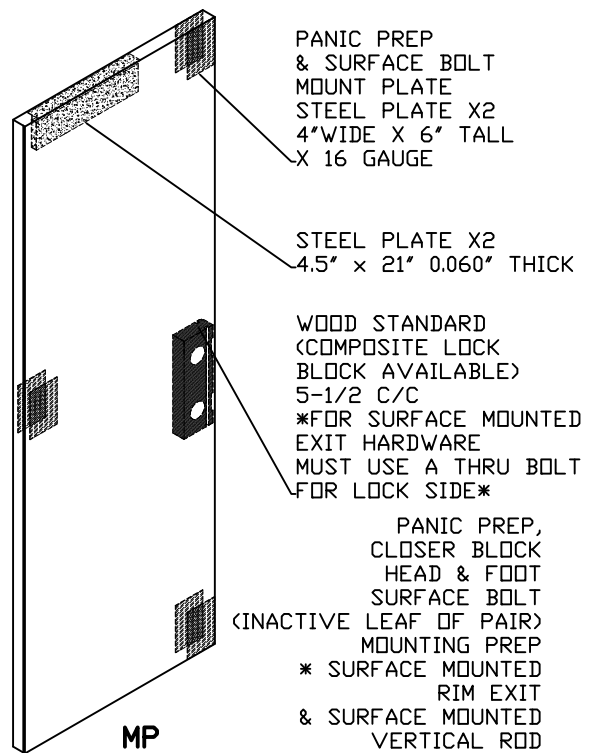
**CBPBWB (WOOD LOCK BLOCK)
CBPBCB (COMPOSITE LOCK BLOCK)**
PANIC PREP
& CLOSER PLATES



HEADER
PANIC PREP
& SURFACE BOLT
MOUNT PLATE
STEEL PLATE X2
4" WIDE X 6" TALL
X 16 GAUGE

FOOTER
PANIC PREP
& SURFACE BOLT
MOUNT PLATE
STEEL PLATE X2
4" WIDE X 6" TALL
X 16 GAUGE

HF B
(HEAD & FOOT
DOOR PREP)



PANIC PREP
& SURFACE BOLT
MOUNT PLATE
STEEL PLATE X2
4" WIDE X 6" TALL
X 16 GAUGE

STEEL PLATE X2
4.5" x 21" 0.060" THICK

WOOD STANDARD
(COMPOSITE LOCK
BLOCK AVAILABLE)
5-1/2 C/C
*FOR SURFACE MOUNTED
EXIT HARDWARE
MUST USE A THRU BOLT
FOR LOCK SIDE*

PANIC PREP,
CLOSER BLOCK
HEAD & FOOT
SURFACE BOLT
(INACTIVE LEAF OF PAIR)
MOUNTING PREP
* SURFACE MOUNTED
RIM EXIT
& SURFACE MOUNTED
VERTICAL ROD

MP
(MULTI-PURPOSE
DOOR PREP)



CLOSER & PANIC REINFORCEMENT
OPTIONS FOR STEEL DOORS

| | |
|---------|---------|
| DWG# | II-53 |
| DATE | 11-2-11 |
| NAME | KRB |
| SECTION | II |
| PAGE | 53 |